



Owner's Manual and Game Instructions



Karella Premium Silver Electronic Dartboard Manual



We congratulate you on the purchase of this Electronic Dartboard
„Karella premium Silver“.

With 41 plays and more than 218 play variations, with LED-Display, with vocal announcement and sound effects as well as the specially wide catch ring let arise the biggest play joy under professional condition.

IMPORTANT SERVICE TIPS AND USE REGULATIONS

Unpack your new Dartboard carefully and examine whether the following additional scope of supply is included:

12 Softdarts approx. 16 g., Substitute-soft tips, A/C adapter, 2 fixing bolts with rawl plug
Operating instructions

Please, check immediately after the purchase of this electronic dartboard all functions and play options for functional ability.

This Dartboard is designated for the private use and not for commercial purposes or commercial use which would limit the durability by an overloading.

With this Dartboard it concerns a consumer goods purchase and, on this occasion, the guarantee claim cannot be given immediately after the purchase or at the end of 6 months any more, if you have not observed during the use the following operating instructions.

This device is planned basically only for the use in the inside area. Should you use it in the outside area, take care for no solar irradiation as well as no humidity.

Close to magnetic fields it can come to malfunctionings of the message display.

Darts: Only the provided soft tip darts with plastic tips may be used or similar soft darts with a weight not higher then 18 g. The soft tip may be no longer as 12 mm of disc penetration depth.
Turn darts clockwise as you pull them from the board. This makes it easier to remove darts and extends the life of the tips.

It is not allowed to use Darts with steel tips (steeldarts). They would damage the electronics of this soft dartboard.

The soft darts may be thrown only in intended distance 244 cm (board distance) and with sensible effort.

The Dartsegments may not be cleaned with abrasive cleaners or similar chemicals.

The segments are produced in a good quality, however, they are a wear product, which you can buy from your trader and therefore can be exchanged very easily.

Occasionally, a dart will cause a segment to become wedged within the segment separator web. If this happens, all games will be suspended and the LCD display will indicate the segment number that is stuck.

To free the segment, simply remove the dart or broken tip from the segment. If the problem is still not solved, try wiggling the segment until it is loose. The game will then resume where it left off.

From time to time a tip will break off and become stuck in the segment. Try to remove it with a pair of pliers or

tweezers by grasping the exposed end and pulling it out of the segment. If this is not possible, you can attempt to push the tip through to the back of the segment. Use a nail that is smaller than the hole and gently push the tip until it falls through the other side. Be careful not to push too far and damage the circuitry behind the segment. Don't be alarmed if tips break. This is a normal occurrence when playing soft tip darts. We included a pack of replacement tips which should keep you supplied for quite some time. When replacing tips, make sure you use the same type of tips that come with this dartboard.

TECHNICAL SECURITY TIPS

Connect the device only in an according to regulation installed outlet, which voltage agrees with the technical data of the net adapter. Use exclusively the net adapter, which is included in the scope of supply.

On no account start running the device, if the device itself shows visible damages or the connecting pipe. This would be a considerable security risk.

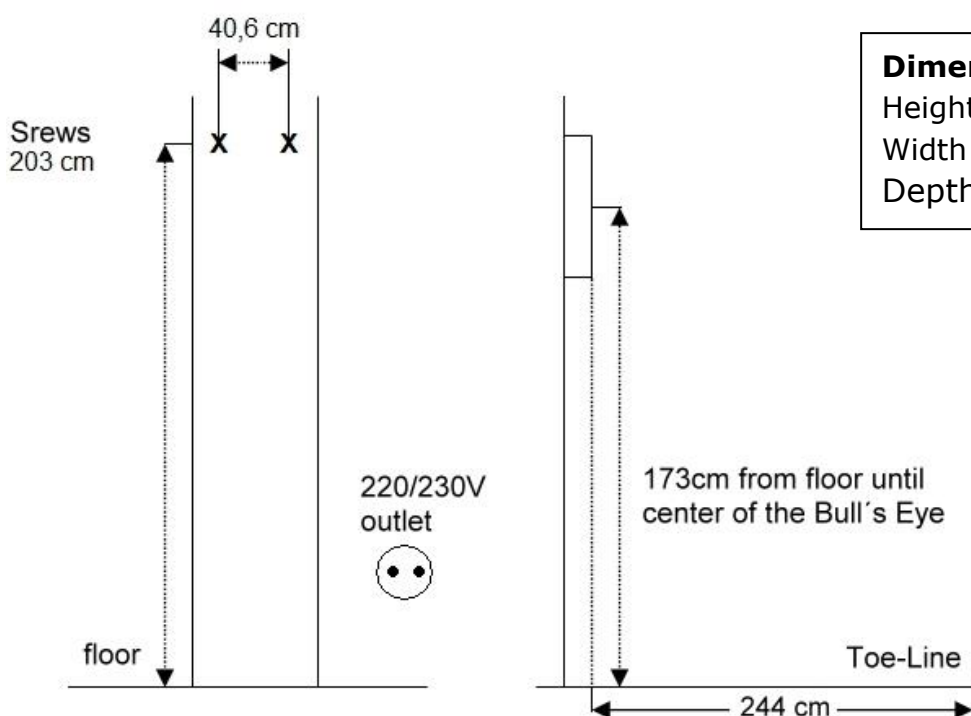
Please, pull after ending of the play or by any disturbance always the net plug (adapter) from the outlet. We recommend the connecting lead to let be in the device socket, because constant, improper pulling out could cause on a continuing basis a loose contact.

Let make any repair in the device or in the adapter only from a professional workshop. With independent, improper repair after opening the dartboard considerable dangers for the user can originate. Besides, in this case there will be lost any guarantee claims.

ASSEMBLY – INSTRUCTIONS

Hang up the dartboard with the provided fixing bolts incl. rawl plug according to the following measurements. Respect to the fact, that the screws are directly on a horizontal line, so that the dartboard just hangs correct later.

With the throwing the distance of the front surface of the dartboard is to the dropping line 2.44 m.



GUARANTEE / REPAIR

The Guarantee begins with the date of the invoice or the date of shipment.

A free exchange, change or repair can only occur, if the „**Important service tips and use regulations**“ were considered.

The guarantee refers to production mistake and material defect.

Should the play device have been put into operation more than 6 months without complaints, we will claim a proof, that you have kept to the proper use according to the service tips and use regulations.

Returns because disturbances (complaints) are only possible after previous communication or arrangement with your trader. Announce to us please immediately all defects of the product.

Returns please very well packed in original packaging with invoice (purchase document) and failure description to the trader's address!

Please, request in addition from the trader for the form „mistake description / complaint dartboard“.

The better the mistake description, the service team can easier localise the reason of a defect and work on it.

Should repair efforts with approved complaints are not successful during the guarantee time or be uneconomical the repair, the right on cancellation of the bill of sale or lowering the purchase price (decrease) is entitled alternatively.

With an evident damage during transport you reject please the acceptance or announce to us immediately a possible damage.

General security tips

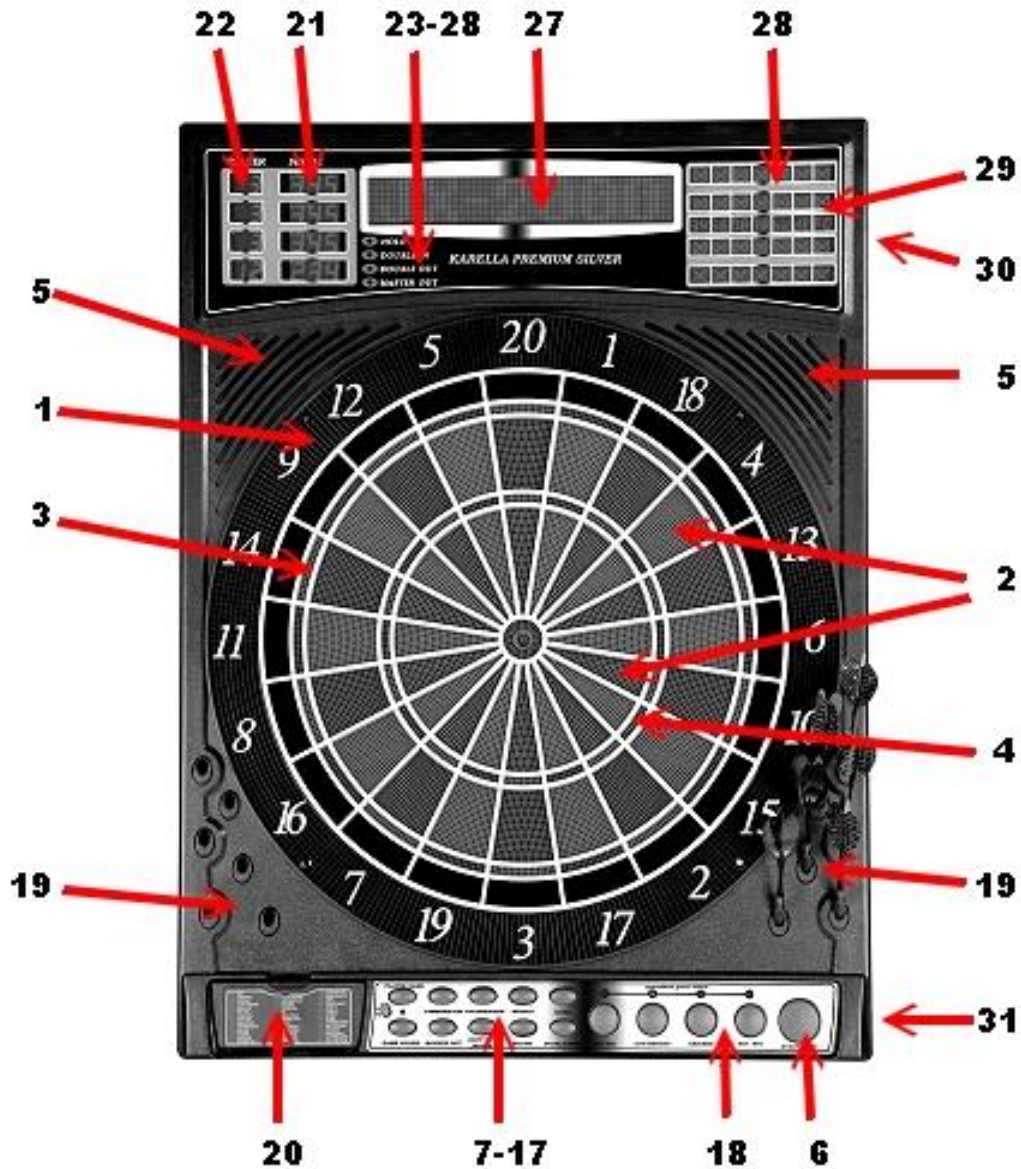
This Dartboard is no toy.

Attention: Danger for children. Use only for children more than 3 years!

Keep away children from this Dartboard

Keep the small parts like darts or spare tips beyond their reach. There is the danger of swallow small parts and suffocation.





- | | | |
|--------------------------|------------------------------|--|
| 1 Catch Ring | 14 Power button | 25 Double Out Indicators |
| 2 Singles Ring | 15 Double/Miss button | 26 Master Out Indicators |
| 3 Doubles Ring | 16 Cybermatch button | 27 Temporary Score < display |
| 4 Triples Ring | 17 Game button | 28 Cricket Scoring Display |
| 5 Speaker | 18 Quick-Pick button | 29 Cricket Segment Display |
| 6 Start/Hold button | 19 Built-in Dart Holders | 30 External Speaker Jack (on side) |
| 7 Reset button | 20 Storage Drawer/ Game Menü | 31 Power Switch and Adapter Jack (on side) |
| 8 Player/Page button | 21 Score Display Indicators | |
| 9 Bounce Out button | 22 Player Indicators | |
| 10 Sound button | 23 Hold Indicators | |
| 11 Select button | 24 Double In Indicators | |
| 12 Dart Out/Score button | | |
| 13 Game Guard button | | |

Dartboard Functions

POWER switch/button - Be sure the AC Adapter is plugged into the jack or batteries are installed. Press the POWER switch to turn game on or off.

START/HOLD button - This multi-function button is used to:

- START the game when all options have been selected.
- Put dartboard in HOLD status between rounds to allow player to remove darts from the target area.

GAME GUARD button –After the START button has been pressed and play has begun, the GAME GUARD feature can be activated. When the button is pressed, all of the keys will ‘lock’. When GAME GUARD is active, a misguided dart hitting a button will not affecting your game. To deactivate the GAME GUARD, simply press the button again and the keys will unlock.

BOUNCE OUT button - Decide before play if you want to count darts that do not remain in board (“bounce-outs”) or not. If not, simply press the BOUNCE OUT button immediately after a bounce out occurs to deduct the score that registers

DART-OUT/SCORE button - The DART-OUT feature is active only during the “01” games (301, 401, etc.). When a player’s score falls below 160, he/she can press the DART OUT button to get a suggestion from the dartboard as to the 3 darts needed to finish the game. Note: doubles and triples are indicated with 2 and 3 dashes to the left of the number respectively. The SCORE feature allows player to access score not current on display.

SOUND button – Sound level adjustable from 0-7 levels (8 levels).

DOUBLE/MISS button – This button is used to activate the Double In/Double Out and Master Out options for the “01” games. This function is only active when selecting 301, 401, etc. games. Note: not all models have Master Out option. The MISS feature is active during play of any game. Press button to register a “missed” dart. Player can press when dart lands outside target area so computer registers a thrown dart.

PLAYER/PAGE button – This button is used at the start of each game to select the number of players you want to play the game. In addition, this button allows players to see other player scores of not on active display. LCD dartboard keeps track of scores for up to 8 players or up to 4 two-person teams. LED dartboard keeps track of scores for up to 16 players or up to 8 two-person teams.

GAME button – Press to page through the on-screen game menu and select game.

SELECT button – Press to select various difficulty settings for games. Many games contain several difficulty options that can be accessed by pressing this button

QUICKPICK buttons – These four game buttons launch you directly into the indicated games. These buttons launch you directly into the game indicated below the button. With the large selection of available games included in this dartboard, these buttons are a convenient way to jump directly into a game. The default setting is for 2 players. Button names are BIG SIX, CUT-THROAT, CRICKET and 301 501.

RESET button – Press to clear display and reset dartboard to opening sound.

SCROLLING DISPLAY: This dartboard includes a scrolling message display located on the display panel. The unique display adds an interactive element to your dart games. From the moment you turn the power on; you will see the visual and audio excitement. An inspirational opening theme will play as the scrolling display flashes through a list of all the features of the dartboard- with a fell special effects mixed in.

The scrolling display will be your name source of information throughout play. Here are a few examples of what will be displayed:

- When selecting games, the display will indicate the name of the game.
- During play, each dart's score will be displayed in the scrolling display.
- A special visual effect will appear when a bullseye is scored.
- You can enter each player's name on the display (see Text Entering section).

TEXT ENTERING feature: The scrolling display is set up so players names can be entered to appear at the start of their respective rounds.

To enter player names:

1. Select the game you want to play by pressing GAME button or by using QuickPick buttons.
2. Select the number of players by pressing PLAYER/PAGE button.
3. Put text entering overlay over the button area (all holes should line up with the buttons). The overlay indicates the different functions for each button when in text entering mode.
4. Press SET/ESC – this will activate text entering mode. The scrolling display will show: 1:_
5. Enter player 1 name. Each button represents several letters of the alphabet. Pressing a button once will get the 1st letter, pressing button twice gets the second letter, the pressing the button three times gets the 3rd letter. You must press the right arrow (→) to move to the next letter of the name you are entering. The left arrow allows you to go back to correct error. When finished with play1 name, press down arrow to enter player 2 name. Display will show: 2._ After all names are entered, press SET/ESC button once and remove overlay. Then press START button to begin play. Each player's name will appear before his or her round.

CyberMatch Feature

This exciting feature allows solo player to play against the computer at one of five different levels of skill – only 1 player can compete against the CyberMatch competitor. This adds a level of competition to normally routine practice sessions.

To activate the CyberMatch opponent:

1. **Select the Game you wish to play**
2. **Press CYBERMATCH button**
Select CyberMatch opponent skill level by pressing the CYBERMATCH button continually

CyberMatch Levels

Level 1	Professional
Level 2	Advanced
Level 3	Intermediate
Level 4	Novice
Level 5	Beginner

3. Press **START** to begin play

When play begins:

The ‘human’ player throws first. After 3 darts are thrown, go to the board to take darts out and press **START** to change to the next player (CyberMatch). Watch as the CyberMatch opponent’s dart scores are registered on the display. After the CyberMatch opponent completes his round, the board will **automatically reset** for the “human” player. Play continues until one player wins. **Good luck!**

Electronic Dartboard Operation

1. Press the **POWER** or switch to ON position (I) to activate dartboard. A short musical introduction is played as the display goes through power-up test.
2. Press **GAME** button until desired game is displayed – or press any of the QuickPick buttons.
3. Press **DOUBLE button** (optional) to select starting and/or ending on doubles or Master Out (used only in 301 - 901 games). This is explained in the game rules section.
4. Press **PLAYER** button to select the number of players (1, 2 ... 16). The default setting is 2 players. Or select Cybermatch option by pressing CYBERMATCH button.
5. Press **START/HOLD** button (red) to activate game and begin play.
6. Throw darts: When all 3 darts have been thrown, a voice command will indicate “Remove Darts” and the score will flash. The darts can now be removed without affecting the electronic scoring. When all darts are removed from the playing surface press the **START** button to go to next player. Voice command will indicate which player is up. Also, the player indicator lights will illuminate to show which player’s turn it is.

Game Content

1	301	22	Golf
2	Cricket	23	Football
3	Scram	24	Baseball
4	Cut Throat	25	Steeple chase
5	Eng Cri	26	Bowling
6	PK-Cri	27	Car Rally
7	Low-Cri	28	Shove Pen
8	Adv-Cri	29	Nine Darts
9	Shooter	30	G & R
10	Trapshoot	31	Gold Hunt
11	Big Six	32	Cas-A
12	Overs	33	Cas-B
13	Unders	34	Cas-C
14	Count Up	35	Elimination
15	High Score	36	Horse She
16	Round Clk	37	Warfare
17	Killer	38	Adv War
18	Doub DN	39	Paintball
19	41	40	Fox Hunt
20	All Fives	41	Tic-Tac-Toe
21	ShangHai		

GAME 1: 301

This popular tournament and pub game is played by subtracting each dart from the starting total until the player reaches exactly 0 (zero). If a player goes past zero it is considered a “*Bust*” and the score returns to where it was at the start of that round. For example, if a player needs a 32 to finish the game and he/she hits a 20, 8, and 10 (totals 38), the score goes back to 32 for the next round.

In playing the game, the double in / double out option can be chosen (double out is the most widely used option). Simply press the “DOUBLE” button to change this setting. LED indicators will display your current setting: Note: you can adjust total score of this game.

- Double In - A double must be hit before points are subtracted from the total. In other words, a player’s scoring does not begin until a double is hit.
- Double Out - A double must be hit to end the game.
- Double In and Double Out - A double is required to start and end scoring of the game by each player.
- Master Out - A double or triple is required to finish the game.

Dart-Out Feature (“01” games only)

This electronic dartboard has a special “**Dart Out**” feature. When a player requires less than 160 to reach zero, the estimate feature becomes active. The player can press the **DART OUT** button to view the darts necessary to throw to finish the game (reach zero exactly). Doubles and triples are indicated with 2 or 3 lines to the left of each number respectively.

GAME 2: CRICKET

Cricket is a strategic game for accomplished players and beginners alike. Players throw for numbers best suited for them and can force opponents to throw for numbers not as suitable for them. The object of Cricket is to “close” all of the appropriate numbers before one’s opponent while racking up the highest number of points.

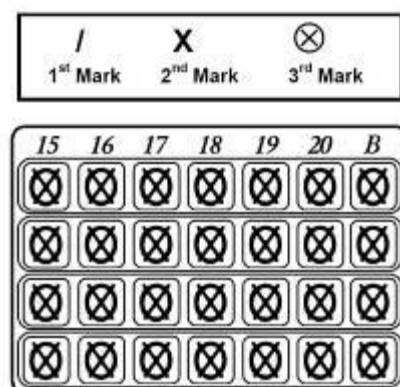
Only the numbers 15 through 20 and the inner/outer bullseye are used. Each player must hit a number 3 times to “open” that segment for scoring. A player is then awarded the number of points of the “open” segment each time he/she throws a dart that lands in that segment, provided their opponent has not closed that segment. Hitting the double ring counts as two hits, and the triple ring counts as 3 hits. Numbers can be opened or closed in any order. A number is “closed” when the other player(s) hit the open segment 3 times. Once a number has been “closed”, any player for the remainder of the game can no longer score on it.

Winning - The side closing all the numbers first and accumulating the highest point total is the winner. If a player “closes” all numbers first but is behind in points, he/she must continue to score on the “open” numbers. If the player does not make up the point deficit before the opposing player(s) “closes” all the numbers, the opposing side wins. Play continues until all segments are closed.

GAME 2-1: NO-SCORE CRICKET

(Press SELECT button when **Cricket** is displayed) Same rules as standard Cricket except there is no point scoring. The object of this version is to be the first to simply “close” all the appropriate numbers (15 through 20 and the bullseye). Note: LCD models have cricket and no-score cricket as separate games, but LED models have these games as 1 game.

Cricket Scoring Display: This dartboard utilizes a dedicated scoreboard that keeps track of each player’s segment status when playing Cricket. The



exclusive Tournament Cricket Scoring display on this dartboard utilizes traditional X and O style characters to track 'marks'. When Cricket is selected, the lights on the Cricket scoreboard are not lit – they will illuminate as 'marks' are scored. There are 3 separate lights within each number (15 through 20 and bullseye). During play, one of the status lights will turn on as a segment is hit. If a double or triple of an active number is hit, 2 or 3 lights will turn on respectively.

GAME 3: SCRAM (For 2 players only)

This game is a variation of Cricket. The game consists of two rounds. The players have a different objective in each round. In round 1, player 1 tries to "close" (score 3 hits in each segment - 15 to 20 and bullseye). During this time, player 2 attempts to rack up as many points in the segments that the other player has not yet closed. Once player 1 has closed all segments, round 1 is complete. In round 2, each player's roles are reversed. Now, player 2 tries to close all the segments while player 1 goes for points. The game is over when round 2 is complete (player 2 closes all segments). The player with the highest point total is the winner.

GAME 4: CUT-THROAT CRICKET

Same basic rules as standard Cricket except once scoring begins, points are added to your opponent(s) total. The object of this game is to end up with the fewest points. This variation of Cricket offers a different psychology to the players. Rather than adding to your own score and helping your own cause as in standard Cricket, Cut-Throat offers the benefit of racking up points for your opponent(s), digging him in a deeper hole. Competitive players will love this variation!

GAME 5: ENGLISH CRICKET (For 2 players only)

This game is another variation of Cricket that requires precision dart throwing. The game consists of two rounds. The players have a different objective in each round. During the first round, player 2 attempts to throw bullseyes – with the objective of needing 9 to complete round 1. Double bull (red center) counts as 2 scores. Any throw that does not hit bullseye is credited to player 1's point total. For example, if player 2 throws a 20, a single bullseye, and a 7 during his/her turn, player 2 will have one bullseye subtracted from the 9 needed, and 27 points will be credited to player 1's point total. Player 2 must exhibit accurate bullseye dart throwing!

Meanwhile, player 1 attempts to score as many points as possible during this first round. Doubles and triples count 2x and 3x their respective values. However, to score points, player 1 must score over 40 points in each turn (3 throws) to amass points against player 2. Only those points over 40 are counted toward the cumulative score. Player 1 must also exhibit precision dart throwing and avoid hitting any bullseyes during this first round because any hits scored by player 1 in the bullseye area will be subtracted from player 2's needed total of 9 bullseyes. Once player 2 reaches the objective of getting 9 bullseyes, the roles are reversed for round two.

GAME 6: PICK IT CRICKET

This game is very similar to standard cricket. Instead of using the traditional segments used in standard cricket, (15, 16, 17,18,19,20, & Bullseye) players face new and unfamiliar targets randomly selected by the computer. The game will consist of six random segments and Bullseye. All other rules apply as detailed in standard Cricket.

GAME 7: LOW PITCH CRICKET

This version of Cricket utilizes the lower numbered segments on the board for a change of pace from the standard Cricket segments. Players will need to "close" segments 1, 2, 3, 4, 5, 6 and Bullseye. All other rules apply as detailed in standard Cricket.

GAME 8: ADVANCED CRICKET

This difficult version of cricket was developed for the advanced player. Players must close out the segments (20, 19, 18, 17, 16, 15 and bullseye) **by using only triples and doubles!** In this challenging game, doubles segments count as 1x the number, and triple segments count as 2x the number. The bullseye scoring is the same as in standard cricket. The first player to close out the numbers with the most points is the winner.

GAME 9: SHOOTER

This challenging game tests the players ability to “group together” darts within a segment during each round of play. The computer will randomly select the segment the players must shoot for at the start of each round – indicated by a flashing number in the display.

Scoring is as follows:

Single segment = 1 Point	Double segment = 2 Points
Triple segment = 3 Points	Single Bullseye = 4 Points.

When the computer selects players to hit double Bullseye, the outer bull scores 2 points and the inner Bull scores 4 points. The player with the most points at the end of the rounds is the winner. Note: you can adjust number of rounds.

GAME 10: TRAPSHOOT

This dart version of trap shooting will keep players on their toes. In each round, the computer selects a set of three targets the player must hit. The targets will be displayed on the right side of the board. The player must try to hit all three targets within 15 seconds with 3 darts. Each hit on a target scores 1 point. (3 points maximum possible for each round) The first player to accumulate 15 points is the winner. Double and triple segments are specific targets in this game. For example, if the target required is a single number and the player hits a double of that segment, no points will be scored! Note: you can adjust number of darts can be shoot in 15 seconds.

GAME 11: BIG SIX

This game allows players to challenge their opponents to hit the targets of their choice. Similar to the popular basketball game “HORSE”; however, players must *earn* the chance of picking the next target for their opponent by making a hit on the current target first.

Single 6 is the first target to hit when the game begins. Before the game starts, players must agree on how many lives will be used by pressing **SELECT** button. Within the three throws, player 1 must hit a 6 to “save” their life. After the current target is hit, the next dart thrown will determine the opponent’s target. If player 1 fails to hit the current target within 3 darts, they will lose a life and a chance to determine the next target for player 2. Player 2 will shoot for the single 6 that player 1 missed – and if it is hit, he can throw for a segment for the next round. Singles, doubles and triples are all separate targets for this game.

The object of the game is to force your opponent into losing lives by selecting tough targets for your opponent to hit such as “Double Bullseye” or “triple 20” The last player with a life left is the winner. Note: you can adjust number of lives.

GAME 12: OVERS

The object of this game is to simply score higher (“over”) than your own previous three dart total score. Before play begins, players choose the amount of lives to be used by pressing the **SELECT** button. When a player fails to score “over “their previous three-dart total, they will lose one life. When a player “equals” the previous three dart total, a life will also be lost. The LED screen on the right will light up once for each life taken away. The last player with a life remaining is the winner. Note: you can adjust number of lives.

GAME 13: UNDERS

This game is the opposite of “Overs”. Players must score less (“Under”) than their own previous three-dart total. The game begins with 180 (highest total possible) when the player shoots higher than his or her own previous three-dart total, they will lose a life. Each dart that hits outside the scoring area, including bounce outs will be penalized with 60 points added to your score. This will be added at the end of the round when the “START/HOLD” button is pressed. The last player with a life remaining is the winner. Note: you can adjust number of lives.

GAME 14: COUNT-UP

The object of this game is to be the first player to reach the specified point total (400, 500 ...). Point total is specified when the game is selected. Each player attempts to score as many points as possible per round. Doubles and triples count 2 or 3 times the numerical value of each segment. For example a dart that lands in the triple 20 segment is scored as 60 points. The cumulative scores for each player will be displayed in the LED display as the game progresses. Note: you can adjust total score.

GAME 15: HIGH SCORE

The rules for this competitive game are simple - Rack up the most points in three rounds (nine darts) to win. Doubles and triples count as 2x and 3x that segment's score respectively. You can adjust number of rounds.

GAME 16: ROUND-THE-CLOCK

Each player attempts to score in each number from 1 through 20 and bullseye **in order**. Each player throws 3 darts per turn. If a correct number is hit, he/she tries for the next number in sequence. The first player to reach 20 is the winner. The display will indicate which segment you are shooting for. A player must continue shooting for a segment until it is hit. The display will then indicate the next segment you should shoot for. There are many difficulty settings available for this game. Each game has the same rules, the differences are detailed as follows:

ROUND-THE-CLOCK 1 - Game starts at segment number 1

ROUND-THE-CLOCK 5 - Game starts at segment number 5

ROUND-THE-CLOCK 10 - Game starts at segment number 10

ROUND-THE-CLOCK 15 - Game starts at segment number 15

Since this game does not utilize point scoring, the double and triple rings count as single numbers.

ROUND-THE-CLOCK Double - Player must score a Double in each segment from 1 through 20 in order.

ROUND-THE-CLOCK Double 5 - Game starts at double segment 5

ROUND-THE-CLOCK Double 10 - Game starts at double segment 10

ROUND-THE-CLOCK Double 15 - Game starts at double segment 15

ROUND-THE-CLOCK Triple - Player must score a Triple in each segment from 1 through 20 in order.

ROUND-THE-CLOCK Triple 5 - Game starts at triple segment 5

ROUND-THE-CLOCK Triple 10 - Game starts at triple segment 10

ROUND-THE-CLOCK Triple 15 - Game starts at triple segment 15

GAME 17: KILLER

This game will really show who your friends are. The game can be played with as few as two players, but the excitement and challenge builds with even more players. To start, each player must select his number by throwing a dart at the target area. The LED display will indicate “SEL” at this point. The number each player gets is his assigned number throughout the game. No two players can have the same number. Once each player has a number, the action starts.

Your first objective is to establish yourself as a “Killer” by hitting the double segment of your number. Once your double is hit, you are a “Killer” for the rest of the game. Now, your objective is to “kill” your opponents by hitting their segment number until all their “lives” are lost. The last player to remain with lives is declared the winner. It is not uncommon for players to “team up” and go after the better player to knock him out of the game. Note: you can adjust number of lives. In addition, for those who really want a challenge, there are three additional difficulty settings: Doubles 3 lives, Doubles 5 lives, and Doubles 7 lives. In these games, you can only “Kill” opponents by scoring doubles in their number segment.

GAME 18: DOUBLE DOWN

Each player starts the game with 40 points. The object is to score as many hits in the active segment of the current round. The first round, the player must throw for the 15 segment. If no 15’s are hit, his score is cut in half. If some 15’s are hit, each 15 (doubles and triples count) is added to the starting total. The next round players throw for the 16 segment and hits are added to the new cumulative point total. Again, if no hits are registered, the point total is cut in half.

Each player throws for the numbers as indicated in the chart below in order (the LED screen will indicate the active segment in which to throw). The player who completes the game with the most points is the winner.

	15	16	D	17	18	T	19	20	B	TOTAL
Player 1										
Player 2										

Any Double
Any Triple

GAME 19: FORTY ONE

This game follows similar rules as standard Double Down as described above with two exceptions. First, instead of going from 15 through 20 and bullseye, the sequence is reversed which will be indicated on the LED display. Second, an additional round is included toward the end in which players must attempt to score three hits that add up to 41 points (20, 20, 1; 19, 19, 3; D10, D10, 1: etc.). This “41” round adds an extra level of difficulty to the game. Remember, a player’s score is cut in half if not successful, so the “41” round presents quite a challenge!

	20	19	D	18	17	T	16	15	41	B	TOTAL
Player 1											
Player 2											

Any Double
Any Triple
“41” Round

GAME 20: ALL FIVES

The entire board is in-play for this game (all segments are active). With each round (of 3 darts) each player has to score a total which is divisible by 5. Every “five” counts as one point. For example 10, 10, 5 = 25. Since 25 is divisible by 5 fives, this player scores 5 points ($5 \times 5 = 25$).

If a player throws 3 darts that are not divisible by 5, no points are given. Also, the last dart of each round must land in a segment. If a player throws the third dart and it lands in the catch ring area (or misses the board completely), he earns no points even if the first two darts are divisible by 5. This prevents a player from “tanking” the third throw if his first two are good. The first player to total fifty-one (51) “fives” is the winner. The LED screen will keep track of the point totals. Note: you can adjust number of 5 you need to get.

GAME 21: SHANGHAI

Each player must progress around the board from 1 through 20 in order. Players start at number 1 and throw 3 darts. The object is to score the most points possible in each round of 3 darts. Doubles and triples count toward your score. The player with the highest score after completing all twenty segments is the winner.

Adjustable Difficulty Settings for Shanghai include the following options:

- *SHANGHAI 5 - Game starts at segment 5*
- *SHANGHAI 10 - Game starts at segment 10*
- *SHANGHAI 15 - Game starts at segment 15*

In addition, we added Super Shanghai as a difficulty option. This game is played exactly as described above except various doubles and triples must be hit as specified by the LED display.

Adjustable Difficulty Settings for Super Shanghai include the following options:

- *SUPER SHANGHAI 5 - Game starts at segment 5*
- *SUPER SHANGHAI 10 - Game starts at segment 10*
- *SUPER SHANGHAI 15 - Game starts at segment 15*

GAME 22: GOLF

This is a dartboard simulation of the game golf (but you don't need clubs to play). The object is to complete a round of 9 through 18 "holes" with the lowest score possible. The Championship "course" consists of all par 3 holes making par 27 for a nine hole round or 54 for a round of 18.

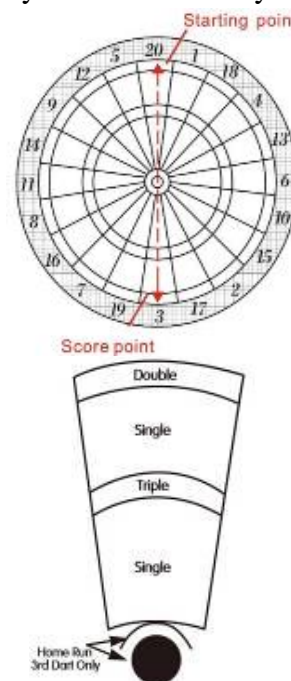
The segments 1 through 18 are used with each number representing a "hole." You must score 3 hits in each hole to move to the next hole. Obviously, double and triples affect your score as they allow you to finish a hole with fewer strokes. For example, throwing a triple on the first shot of a hole it is counted as an "eagle" and that player gets a complete that hole with 1 "stroke."

Note: The active player continues to throw darts until he "holes out" (scores 3 hits on the current hole). The voice announcer will indicate the player that is up - listen carefully to avoid shooting out of sequence. By the way, there are no "gimmes" in this game!

GAME 23: FOOTBALL

Strap your helmet on for this game! The first thing necessary is to select each player's "playing field." This can be done by throwing a dart or by manually pressing a segment on the board by each player. This is entirely up to you, but whichever segment is selected becomes your starting point which carries through the bullseye and directly across to the other side of the bullseye (see diagram). The First player to "score" is the winner. The LED display will keep track of your progress and indicate the segment you need to throw for next.

For example, if you select the 20 segment, you start on the double 20 (outer ring) and continue all the way through to the double 3. The "field" is made up of 11 individual segments and must be hit in order. So, keeping with the example above, you must throw darts in the following segments in this order: Double 20 ... Outer Single 20(Rectangle) ... Triple 20 ... Inner Single 20(Triangle) ... Outer Bullseye ... Inner Bullseye ... Outer Bullseye ... Inner Single 3(Triangle) ... Triple 3 ... Outer Single 3 (Rectangle) ... and finally a Double 3.



GAME 24: BASEBALL

This dartboard version of baseball takes a great deal of skill. As in the real game, a

complete game consists of 9 innings. Each player throws 3 darts per “inning.” The field is laid out as shown in the diagram.

<u>Segment</u>	<u>Result</u>
Singles segments	“Single” - one base
Doubles segment	“Double” - two bases
Triples segment	“Triple” - Three bases
Bullseye	“Home Run” (<i>can only be attempted on third dart of each round</i>)

The object of the game is to score as many runs as possible each inning. The player with the most runs at the end of the game is the winner.

GAME 25: STEEPLECHASE

The object of this game is to be the first player to finish the “race” by being the first to complete the “track.” The track starts at the 20 segment and runs clockwise around the board to the 5 segment and ends with a bullseye. Sounds easy right? What has not yet been specified is that you must hit the inner single segment (Triangle) of each number to get through the course. This is the area between the bullseye and the triples ring. And, as with a real steeplechase, there are obstacles throughout the course to hurdle. The four hurdles are found at the following places:

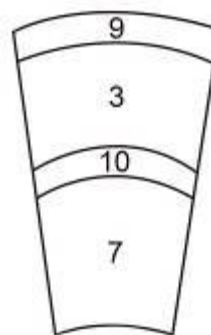
□□ 1st fence	Triple 13	□□ 2nd fence	Triple 17
□□ 3rd fence	Triple 8	□□ 4th fence	Triple 5

The first player to complete the course and hit the bullseye wins the race.

GAME 26: BOWLING

This dartboard adaptation of bowling is a real challenge! It is a difficult game in that you must be very accurate to rack up a decent score. Player one starts the game. You must select your “alley” by either throwing dart or manually pressing *Diagram* segment of choice. Once alley is selected, you have 2 remaining darts to throw in which to score points or “pins.” Each specific segment in your “alley” is worth a given pin total:

<u>Segment</u>	<u>Score</u>
Double	9 pins
Outer Single	3 pins
Triple	10 pins
Inner Single	7 pins



There are several rules for this game as follows:

1. A perfect game score would be 200 in this version of bowling
2. You cannot hit the same singles segment twice within the same “frame” (round). The second hit will count as zero points. **Hint:** Try to hit each single to reach 10 points in the frame.
3. You can score 20 points per “frame” by hitting the triple segment twice.
4. If your first dart hits a Double segment, your second dart hits a Double too and the third dart hit any segment, you will score 10 pins (point) for this round.
5. If your first dart hits a Double segment, your second dart hits an Outer or Inner Single segment and the third dart hit the Double, this round will only score 9 points.
6. If your first dart hits a Double segment, your second dart hits a Triple and the third dart hit a Double segment, you will score 19 points total.

GAME 27: CAR RALLYING

This game is similar to steeplechase except we let you set up your own “race track.” You can set up as many obstacles as you wish. The track must be 20 lengths long.

Before the game starts, the LED display will prompt you to select the course (“SEL”). Players should alternate selecting segments by pressing on the specific segment of your choice. Note: You will have to hit the exact segment you selected to move on during the race. If you choose inner single 20, that inner single area will need to be hit during the race. The LED display will indicate inner single with a line next to the bottom of the 1, an outer single is shown with a line next to the top portion of the 1.

Obstacles usually comprise hitting a difficult number before continuing on the racetrack. Again, the route can be made as difficult or easy as you wish and can go anywhere on the target area of the board. After the track is selected, press START to begin the race. The first player to complete the course is the winner.

GAME 28: SHOVE A PENNY

Only the numbers 15 through 20 and the bullseye are used. Singles are worth 1 point, doubles are worth 2, and triples are worth 3 points. Each player must throw for the numbers in order with the objective of scoring 3 points in each segment to move on to the next. If a player scores more than 3 points in any one number, the excess points are given to the next player. The first player to score 3 points in all segments (15 - 20 and bull) is the winner.

GAME 29: NINE-DART CENTURY

The object of this game is to attempt to score 100 points, or come as close as possible, after 3 rounds (9 darts). Doubles and triples count as 2x and 3x their value respectively. Going over 100 points is considered a “bust” and causes you to lose unless all players go over. In that case, the player closest to 100 wins (player that scored the lowest amount over 100).

GAME 30: GREEN VS. RED *(2 players only)*

This game is a race around the board, where skill at hitting doubles and triples pays off with victory. Player 1 is “green” and player 2 is “red.” Player 1 shoots for only doubles and triples that are green and works around the board clockwise. Player 2 starts at 20 and works around the board counter-clockwise, shooting for red segments (the temporary score display will indicate which segment to throw for). Note: a maximum of one double and one triple of the same number can be scored in a single round. What’s more, hitting the wrong number (of your opponent’s color) **subtracts** that amount from your score - so be careful. The player with the most points after completion of the game is the winner.

GAME 31: GOLD HUNTING

The object of this game is to find “gold.” You collect gold for each 50 points. Gold is only collected only if your score is exactly 50 or a multiple of 50 (100, 150, etc.) at any point during a round. However, since “gold” can make a person greedy, not only do you collect gold for every multiple of 50, you also steal 1 gold from all other players. Therefore, as you collect a gold, you take 1 gold from all other players who have gold. This is a real back-and-forth game, but the player who reaches to selected total gold required first is the winner.

GAME 32: CASINO A - FLUSH

This game, inspired by casino play, tests your nerve and skill as you gamble points to defeat your opponent. The object of the game is to be the first player to reach the designated point total. Note: you can adjust the end-game point total.

The dartboard will indicate the number you must throw for. The default “bet” is 10 points. However, each player can increase his bet at the start of each round to 20, 30, 40 ... 90 points. Players usually wager high when a number appears they are confident in hitting. To change your bet (at start of a round), press the **BOUNCE OUT** button. Your new bet will be indicated in the display (for example, “b20“will appear to indicate a bet of 20 points). The bet will automatically revert to 10 points at the start of each round.

To “cash in” on your bet, you need to hit the indicated number segment. Hitting a single on the first throw is a “push” and does not score points. However throwing a double or triple of the correct segment on the first throw counts as 1x and 2x your bet respectively. Your next two darts in the round count as 1x, 2x, and 3x your bet for a single, double, or triple. The segment scoring display will light to indicate the number of successful hits you have registered. Failing to hit the active segment in a round costs you the value of the bet you selected at the start of the round. The first player to reach the designated point total is the winner.

GAME 33: CASINO B - STRAIGHT

This game, while similar to Casino A, has an added element of play. Again, the object of the game is to be the first player to reach the designated point total. Note: you can adjust the end-game point total.

The dartboard will indicate the number you must throw for. The default “bet” is 10 points. However, each player can increase his bet at the start of each round to 20, 30, 40 ... 90 points. Players usually wager high when a number appears they are confident in hitting. To change your bet (at start of a round), press the **BOUNCE OUT** button. Your new bet will be indicated in the display (for example, “b20“will appear to indicate a bet of 20 points). The bet will automatically revert to 10 points at the start of each round.

To “cash in” on your bet, you need to hit the indicated number segment. Hitting a single on the first throw is a “push” and does not score points. However throwing a double or triple of the correct segment on the first throw counts as 1x and 2x your bet respectively. **This is where the new element comes into play.** Instead of throwing for the same segment during each round, your sequence is to span across the target area. For example, if the display indicated to throw for segment 1, you attempt to throw for segment 1, followed by a bullseye, followed by segment 19. The temporary score display will indicate segment to aim for after each throw.

Your next two darts in the round count as 1x, 2x, and 3x your bet for a single, double, or triple (bullseye segment has no triple area). The segment scoring display will light to indicate the number of successful hits you have registered. Failing to hit the active segment in a round costs you the value of the bet you selected at the start of the round. The first player to reach the designated point total is the winner.

GAME 34: CASINO C - 3-STAR

This version of Casino is very difficult, as you need to score at least 3 hits in the active segment during each round to score points. Again, the object of the game is to be the first player to reach the designated point total. Note: you can adjust the end-game point total.

Only the segments 15 through 20 and bullseye are active in this game. The segment scoring display will be lit at the start of each round. The default “bet” is 10 points. However, each player can increase his bet at the start of each round to 20, 30, 40, ... 90 points. Players usually wager high when a number appears they are confident in hitting. To change your bet (at start of a round), press the **BOUNCE OUT** button. Your new bet will be indicated in the display (for example, “b20“will appear to indicate a bet of 20 points). The bet will automatically revert to 10 points at the start of each round.

To “cash in” on your bet, you need to hit an active segment (15 - 20 and bullseye) 3 times or score a triple

“opens” the segment for scoring and that player receives 3 times the value of his bet. Doubles and triples count as 2 and 3 hits respectively. Failing to hit a segment 3 times forces that player to lose the value of his bet. Also, hits within segments are **not** carried over to the next round. The first player to reach the designated point total is the winner.

GAME 35: ELIMINATION

The object of the game is to “Eliminate” your opponents. The rules are very simple. Each player must score higher total points with 3 darts than the opponent before them. Each player starts with 3 lives. If the player fails to score higher total points than the previous opponents score, they lose one life. Tie scores will also result in a lost life. The winner is the last player with lives remaining. Note: you can adjust number of lives.

GAME 36: HORSESHOES

This 2 -player game uses only the 20 and 3 segments to represent the two horseshoe pits. Player 1 will shoot at the 20 segment and Player 2 will shoot at the 3 segment. Scoring is cumulated per round. First player to score 15 points is the winner.

Scoring is as follows:

TRIPLE RING = Ringer 3 points
DOUBLE RING= Leaner 2 points

INNER SINGLE SEGMENT (Triangle) = 1 point
OUTER SINGLE SEGMENT (Rectangle) = 0 point

Scores will only count for the player or team with the most points in that round. For example, if player 1 scores 3 points and player 2 scores 1 point, only player 1 will awarded 3 points for that round. Rounds continue until 15 points are scored. Note: you can adjust the end-game point total.

GAME 37: BATTLEGROUND

In this 2-player game, the dartboard is a battleground divided into two halves. The first player to hit all of the opposing segments (armies) wins the game. Segments do not have to be hit in order.

Player 1 is the “TOP” army and shoots darts at the bottom sections of the board.

Player 1 needs to hit bottom segments (6, 10, 15, 2, 17, 3, 19, 7, 16, and 8)

Player 2 is the “BOTTOM” army and shoots for the top section of the dartboard

Player 2 needs to hit top segments (11, 14, 9, 12, 5, 20, 1, 18, 4, and 13)

Adjustable difficulty settings are as follows:

BATTLEGROUND DOUBLES:

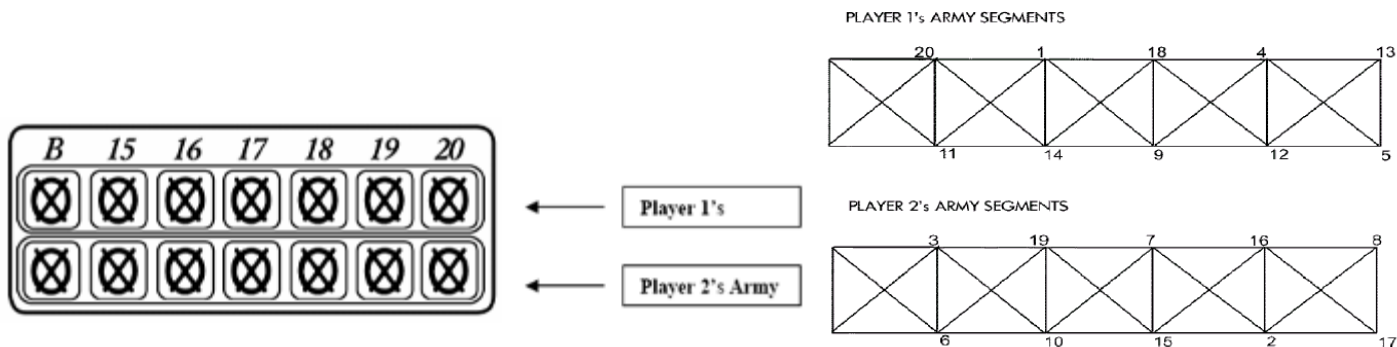
- Players shoot for double segments only to eliminate opponent’s armies

BATTLEGROUND TRIPLES:

- Players shoot for triple segments only to eliminate opponent’s armies

BATTLEGROUND with GENERALS

This variation of the game includes one more obstacle to accomplish. Players must capture the “general” after all segments (armies) have been hit to win the game. One hit on the bullseye will capture the general. Hits to the bullseye will not count if all segments are not first closed.



The top cricket scoring display on the dartboard shows player 1's army segments. Player 2's army segments are in the second row. Each time a segment is hit, the corresponding light will shut off. Follow the scoreboard map on the next page to keep track of which segments you need to hit to win.

GAME 38: ADVANCED BATTLEGROUNDS

The rules are the same as standard Battleground except now there are land mines on the battlefield!

Players must be careful to avoid the land mines located in the Triple and Double rings of opponents segment numbers.

Any player that hits a double or triple ring on the opposing teams' battlefield will lose an army of his or her own. For example, if player 1 mistakenly hit the triple ring of the "6" segment, they would lose their own army at the "11" segment.

GAME 39: PAINTBALL

This game is similar to "Battleground" except there is an alternative way to win the battle other than just hitting the opposing teams' armies segments. As in the real game of paintball, players can also capture the opposing team's flag to win the game. To capture the flag, the double bullseye must be hit 3 times to capture the opposing teams' flag! Single bullseyes will not count towards the 3 needed to capture the flag. Double bullseyes do not have to be scored in the same round and will be tallied during the game. First player to either capture the flag or eliminate the opposing army is the winner.

Adjustable Difficulty Settings

- Paintball Doubles Players must either hit 3 double bullseyes to capture the flag or hit double ringed segments to eliminate armies.
- Paintball Triples Players must either hit 3 double bullseyes to capture the flag or hit triple ringed segments to eliminate armies.

GAME 40: CAT & MOUSE

This is a very challenging 2-player game that is best suited for players of advanced skill. One player will play the role of the cat and the other will be the mouse. The object of the game is for the mouse to get back to his hole before being caught by the cat. The mouse starts first from the "20" segment and proceeds counter-clockwise around the dartboard by hitting first the double segment and then the single of each segment. The cat starts back at the "18" segment and proceeds counter clockwise around the dartboard to catch the mouse by hitting doubles only of each segment. If the mouse makes it all the way around the board back to the double 20, the mouse wins the game. If the cat hits the double segment that the mouse is on, the cat has caught the mouse and has won the game.

GAME 41: TIC-TAC TOE

Using the specified dartboard segments, the object of the game is to close out numbers to gain an X or an O. Traditional tic-tac-toe rules apply. Three X's or O's in a row horizontally, diagonally, or vertically will win the game. In order to place an X or O in one of the boxes, a player needs to score 3 times within that segment. (Double and triple rings count) (B is the Bullseye) The number of hits on each segment will be displayed on the screen. One hit to the segment will show “\” Two hits will show “X” A closed segment will display either an “ ⊗ ” or “O” depending on which player is scoring. Use the map below as a guide during play.

12	20	18
11	B	6
7	3	2

Disposal of the old device

This electronic Dartspiel is marked according to the EU directive in 2002 / 96 / CE over Electric and electronics-old devices (WEEE). Please, provide for the fact that the device is decontaminated properly, so that possible negative effects on environment and health are avoided which could originate with an improper disposal of the old device.

The symbol on the product means that this product must be heard not in the normal domestic waste, but be handed over the respective municipal taking back system of Electric and electronics-old devices. The disposal must occur in the harmony with the valid environmental directives for the waste disposal.

For closer information about disposal and recycling of this product you turn please to your municipal facilities (environmental office) or to the waste disposal society of your town or to your trader.



WinSport, Dart + Sport + Groß- & Einzelhandel , Waldstraße 21, D -86517 Wehringen

Telefon: +49 (0)8234 90 49 30, Telefax: +49 (0)8234 90 23 83

E-Mail: info@winsport.de, Internet: www.winsport.de