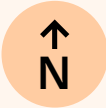


# 4. FLOOR



Ülemiste  
City

OFFICE 4.02  
201.6 m<sup>2</sup>

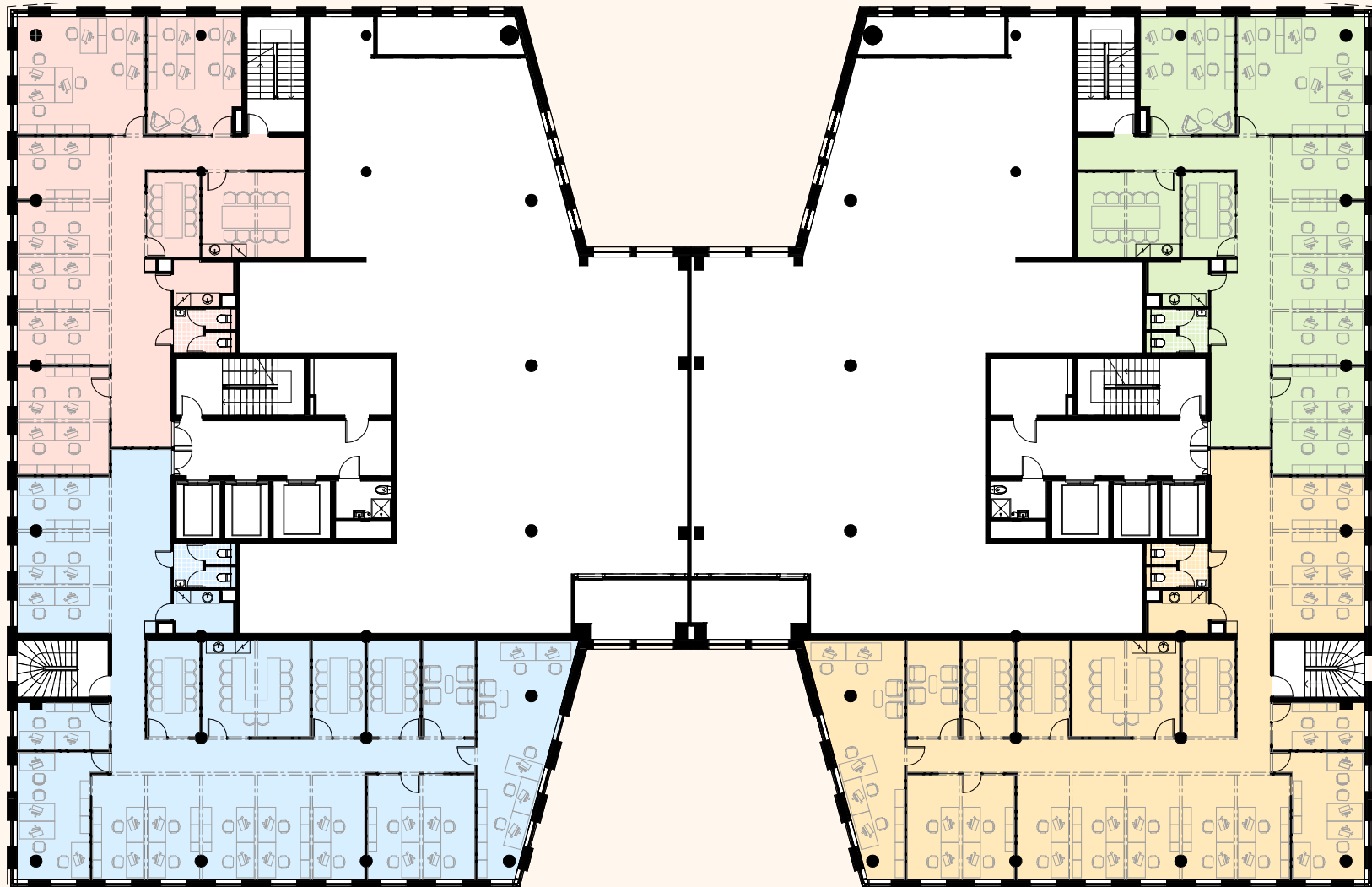
If desired, the  
spaces can be  
connected

OFFICE 4.01  
312.1 m<sup>2</sup>

OFFICE 4.03  
201.6 m<sup>2</sup>

If desired, the  
spaces can be  
connected

OFFICE 4.04  
312.1 m<sup>2</sup>



CONTACT US

MASING BUILDING

**Karmo Karelson**

Sales manager

+372 5688 7756

karmo.karelson@mainorulemiste.ee